



SUREFIRE SUPPRESSORS

AMERICAN BUILT. AMERICAN STRONG.

SUREFIRE®



THE WORLD'S ULTIMATE SUPPRESSORS™

In 2002, SureFire reinvented the suppressor—and today our SOCOM Series models are setting the bar even higher. U.S. Special Operations Command (USSOCOM) held the most extensive and rigorous suppressor trials in history. The result: SureFire's SOCOM556-RC and SOCOM762-RC suppressors were the clear winners. The advanced technology incorporated into SOCOM Series suppressors provides significant advantages, like minimized gas blowback as well as the virtual elimination of first-round flash thanks to improved gas-flow dynamics and our patented front plate design.

From the start, SureFire suppressors have provided superior sound, flash, and muzzle blast reduction, which are all core components of our signature reduction philosophy. Our patented Fast-Attach® system permits the mounting of our suppressors solidly to a SureFire WARCOMP, flash hider or muzzle brake

in seconds, and lets you remove it just as quickly. SureFire SOCOM suppressors also produce minimal and consistent point-of-impact shift compared with the unsuppressed weapon—regardless of the number of attach/detach cycles—and typically improving accuracy.

SureFire suppressors, built from U.S. mill-certified high-temp alloys, provide extreme resistance to gas and particle erosion and typically outlast the barrels to which they are mounted. Durable, lightweight materials, coupled with compact size, along with minimal impact add to weapon maneuverability and handling. Additionally, SOCOM Series suppressors boast several innovative features such as vented blast baffles, internal blast shields, and improved gas-flow dynamics. And they're proudly built in America to ensure quality.



| | |
|-----------|---|
| 02 | THE SUREFIRE SUPPRESSOR STORY |
| 03 | AMERICAN BUILT. AMERICAN STRONG. |
| 04 | SOCOM SERIES |
| 12 | SF RYDER™ SERIES |

| | |
|-----------|-------------------------------|
| 18 | SOCOM MUZZLE DEVICES |
| 21 | WARDEN BLAST DIFFUSER |
| 22 | BORE ALIGNMENT RODS |
| 24 | MORE SUREFIRE PRODUCTS |

Export of all sound suppressors, muzzle devices, blank safety devices, blank firing adapters, trainers, and high-capacity magazines shown herein requires a valid export license issued by the U.S. Department of State.



THE SUREFIRE SUPPRESSOR STORY //

With the launch of our Suppressor Division in 2002, SureFire set out to permanently transform the sound suppressor. Ground-breaking design—in conjunction with advanced metallurgy—has enabled SureFire to build suppressors that are extremely effective, compact, lightweight, durable, and easily attach and detach with minimal and consistent point-of-impact shift. American-made SureFire suppressors minimally affect accuracy and, in most cases, actually improve it. This ballistic consistency, combined with extreme durability, makes full-time suppressor use practical.

Our SOCOM Series suppressors—which won the most rigorous and extensive suppressor trials in history—now provide even more advanced features, like improved gas-flow dynamics and a patented front-plate design that minimizes first-round flash to unprecedented levels. We spare no effort in our research and development because we believe that those who go in harm's way—both at home and overseas—deserve the world's ultimate suppressors.



BARRY DUECK

VP OF SUPPRESSORS AND WEAPONS

Barry Dueck is a former Marine, Co-Founding Instructor of the SureFire Institute and National Champion Competitive Shooter, but his primary task is build the world's ultimate suppressor and weapon products. Assigned by Dr. John Matthews, President and Founder of SureFire, Barry and his team have accomplished just that by establishing the gold standard by which all other suppressor products are measured. The original goal set continues to be to build the best possible product for those that go into harm's way protecting our freedom.



AMERICAN BUILT. AMERICAN STRONG.

SureFire's systematic approach to minimizing the signatures of military and law enforcement personnel in combat-like situations, is driven by a simple yet powerful concept: Combatants are safer and more effective when their presence and locations are unknown to the enemy. Minimizing signature—sound, dust, and muzzle flash—is crucial in masking a combatant's location. SureFire SOCOM suppressors minimize three very important signatures associated with firing a suppressed weapon:

- ➔ **Sound** – SOCOM suppressors significantly attenuate a weapon's sound signature and make it more difficult for enemy combatants to pinpoint the location of a fired shot.
- ➔ **Muzzle Flash** – SOCOM suppressors greatly reduce detectable muzzle flash, including virtually eliminating flash no matter what round count.
- ➔ **Blowback** – SOCOM suppressors minimize back pressure of returning gases thus limiting bolt velocity increase allowing for proper feeding of ammunition from the magazine and reducing felt gas on the shooter.

SureFire SOCOM suppressors offer other benefits as well, including helping prevent hearing loss for operators and their teammates, enabling the hearing of communication in combat, and preserving dark-adapted vision. SureFire also makes low-signature illumination tools and WeaponLights, including our V-Series models that produce both white-light and infrared illumination that's nearly invisible to the naked eye.

Learn more at www.surefire.com



SUREFIRE SOCOM SERIES

PRECISION, QUALITY, AND PERFORMANCE THAT ARE SIMPLY UNMATCHED!

1. HIGH-PERFORMANCE BAFFLES

significantly attenuates sound

2. NEW CUTTING-EDGE HIGH-STRENGTH WELDING

optimizes strength and performance

3. NEXT-GEN FRONT-PLATE DESIGN

increases structural integrity and virtually eliminates first-round flash

4. PATENTED FAST-ATTACH® SYSTEM

provides rock-solid attachment in seconds, using SureFire adapters, with no tools required (see below)

5. MINIMAL & CONSISTENT POINT-OF-IMPACT SHIFT

maintains strict standards for accuracy, even with repeated attachment and removal of suppressor

6. ENHANCED GAS-FLOW DYNAMICS

reduce backpressure, greatly reducing suppressed cyclic rate and gas blowback

7. HIGH-TEMP US-MILL CERTIFIED ALLOYS

resist extreme temperatures and erosion from super-heated gasses and particles

8. FACTORY TEST FIRED

with less than 1 MOA shift & 1 MOA group

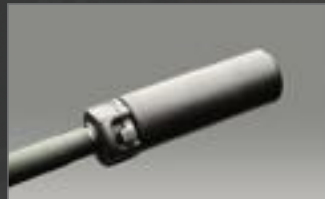
Fast-Attach System



Slide suppressor over adapter



Tighten locking ring



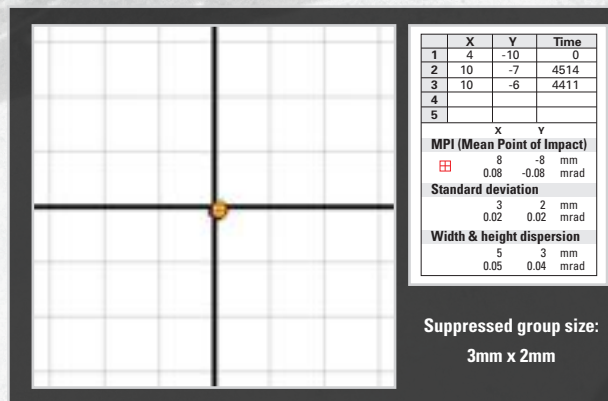
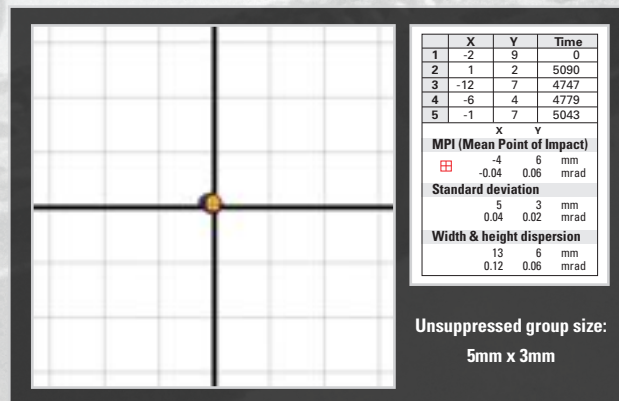
Suppressor installed



➔ MINIMAL & CONSISTENT POINT-OF-IMPACT SHIFT

UNSUPPRESSED

SOCOM556-MINI SUPPRESSOR



FULL-TIME SUPPRESSION. FULL-TIME PROTECTION.

Keeping a SureFire suppressor on your weapon full-time not only gives you sound, flash, and dust/foilage signature reduction, but it also helps protect you from temporary hearing loss that can shut out crucial commands or sounds, compromising your safety and your mission. Full-time use can also protect against permanent hearing loss that can compromise your safety, limit your deployment options, and impact your quality of life.

SureFire tests each suppressor to ensure that it meets our strict standards for accuracy (less than one minute of angle) and point-of-impact shift (less than one minute-of-angle shift in group center, compared with the unsuppressed group).

Targets show typical results when SureFire SOCOM Series suppressors are attached to a firearm: minimal shift from firearm's point-of-impact when unsuppressed.

FIREARM USED: Remington 700 in .223 Remington, 20" barrel, SFMB-556-1/2-28 muzzle brake/adaptor

AMMUNITION: Black Hills 77-grain BTHP

RANGE: 100 yards

LEFT-HAND GROUP: Unsuppressed

RIGHT-HAND GROUP: SureFire SOCOM556-MINI suppressor

Initially introduced in early 2015, the SOCOM2 suppressors have minimal increase in capability than that of the SOCOM option, and have had a significant increase in production capability. Now when using computer controlled laser welding there is a significant decrease in production cycle-time, thus a reduction in cost, which has been passed along to the end-user offering the best suppressor product available at a lower price. The SOCOM2 suppressors continue to be constructed of advanced high-temperature alloys and stainless steel featuring a redesigned internal venting system to additionally reduce back pressure and in some cases a further reduction in sound attenuation. Aesthetically the visual difference of the SOCOM2 suppressors is a new recessed end cap.

Every SOCOM Series suppressor comes with its own protective carrying pouch.



SOCOM556-RC2

FOR 5.56 mm RIFLES & CARBINES



BLACK
SOCOM556-RC2-BK



DARK EARTH
SOCOM556-RC2-DE



Export of select products shown requires a valid export license issued by the U.S. Department of State.



SOCOM556-SB2

FOR 5.56 mm RIFLES & CARBINES



BLACK
SOCOM556-SB2-BK



DARK EARTH
SOCOM556-SB2-DE

Designed for barrels
shorter than 10.3"

ROCK-SOLID ATTACHMENT



SOCOM556-MINI2

FOR 5.56 mm RIFLES & CARBINES



BLACK
SOCOM556-MINI2-BK



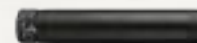
DARK EARTH
SOCOM556-MINI2-DE

SPECIFICATIONS

| | SOCOM556-RC2 | SOCOM556-SB2 | SOCOM556-MINI2 |
|--------------|-----------------------------|-----------------------------|-----------------------------|
| CALIBER | 5.56 mm | 5.56 mm | 5.56 mm |
| WEIGHT | 17.4 oz (493 g) | 17.4 oz (493 g) | 14.4 oz (408 g) |
| DIAMETER | 1.5" (3.8 cm) | 1.5" (3.8 cm) | 1.5" (3.8 cm) |
| LENGTH | 6.4" (16.2 cm) | 6.4" (16.2 cm) | 5.0" (12.7 cm) |
| CONSTRUCTION | High-temp alloy & stainless | High-temp alloy & stainless | High-temp alloy & stainless |

**SOCOM300-SPS**

OPTIMIZED FOR 300 BLACKOUT CARTRIDGE

**BLACK**
SOCOM300-SPS-BK**DARK EARTH**
SOCOM300-SPS-DE

This best-in-class suppressor provides the ultimate sound suppression of .300 Blackout ammo. Expertly designed with deep, highly specialized V-shaped baffles for superior gas-flow dynamics with subsonic and supersonic ammo.

FULL-TIME USABILITY

**SOCOM762-RC2**

FOR 7.62 mm RIFLES & CARBINES

**BLACK**
SOCOM762-RC2-BK**DARK EARTH**
SOCOM762-RC2-DE

Also compatible with .300
Winchester Magnum and
.300 WSM



SOCOM762-MINI2

FOR 7.62 mm RIFLES & CARBINES



BLACK
SOCOM762-MINI2-BK



DARK EARTH
SOCOM762-MINI2-DE

Optimized for rifles and carbines chambered in 7.62x39; also provides sufficient suppression for rifles and carbines (with a 16" barrel or longer) chambered in 7.62x51.



| | SOCOM300-SPS | SOCOM762-RC2 | SOCOM762-MINI2 |
|-----------------------|-----------------------------|-----------------------------|-----------------------------|
| SPECIFICATIONS | | | |
| CALIBER | 7.62 mm | 7.62 mm | 7.62 mm |
| WEIGHT | 20.3 oz (575 g) | 20.8 oz (590 g) | 17.4 oz (493 g) |
| DIAMETER | 1.5" (3.8 cm) | 1.5" (3.8 cm) | 1.5" (3.8 cm) |
| LENGTH | 8.0" (20.3 cm) | 8.4" (21.3 cm) | 6.4" (16.2 cm) |
| CONSTRUCTION | Stainless & high-temp alloy | High-temp alloy & stainless | High-temp alloy & stainless |

GENESIS 762

THREAD-ON SOUND SUPPRESSOR

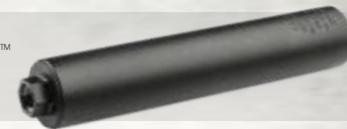
**BLACK**

GENESIS-762-5/8-24-BK
GENESIS-762-9/16-24-BK

**DARK EARTH**

GENESIS-762-5/8-24-DE
GENESIS-762-9/16-24-DE

Tough, corrosion-resistant Cerakote™ finish in Black or Dark Earth



The best-in-class Genesis 762 thread-on suppressor—member of the SureFire Genesis Series—boasts the ultimate sound attenuation of any suppressor ever built for .300 Black Out (subsonic or supersonic), .308, and .300 Win Mag.

| SPECIFICATIONS | | GENESIS 762 |
|----------------|--|-----------------------------|
| CALIBER | | 7.62 mm |
| WEIGHT | | 17.7 oz (501.8 g) |
| DIAMETER | | 1.5" (3.8 cm) |
| LENGTH | | 8.1" (20.6 cm) |
| CONSTRUCTION | | High-temp alloy & stainless |

SOCOM338-Ti

FOR .338 LAPUA SNIPER RIFLES

**BLACK**

SOCOM338-Ti-BK

**DARK EARTH**

SOCOM338-Ti-DE



Lightweight, high-precision titanium suppressor maintains accuracy without affecting balance and harmonics of rifle.

| SPECIFICATIONS | | SOCOM338-Ti | SOCOM556-MG | SOCOM762-MG |
|----------------|--|---------------------|-----------------------------|-----------------------------|
| CALIBER | | .338 | 5.56 mm | 7.62 mm |
| WEIGHT | | 22.0 oz (624 g) | 23.2 oz (595 g) | 29.3 oz (831 g) |
| DIAMETER | | 2.0" (5.1 cm) | 1.5" (3.8 cm) | 1.5" (3.8 cm) |
| LENGTH | | 10.0" (25.4 cm) | 7.0" (17.8 cm) | 9.3" (23.6 cm) |
| CONSTRUCTION | | High-grade titanium | High-temp alloy & stainless | High-temp alloy & stainless |



SOCOM556-MG

FOR 5.56 mm MACHINE GUNS



BLACK
SOCOM556-MG-BK



DARK EARTH
SOCOM556-MG-DE

BUILT TO LAST



SOCOM762-MG

FOR 7.62 mm MACHINE GUNS



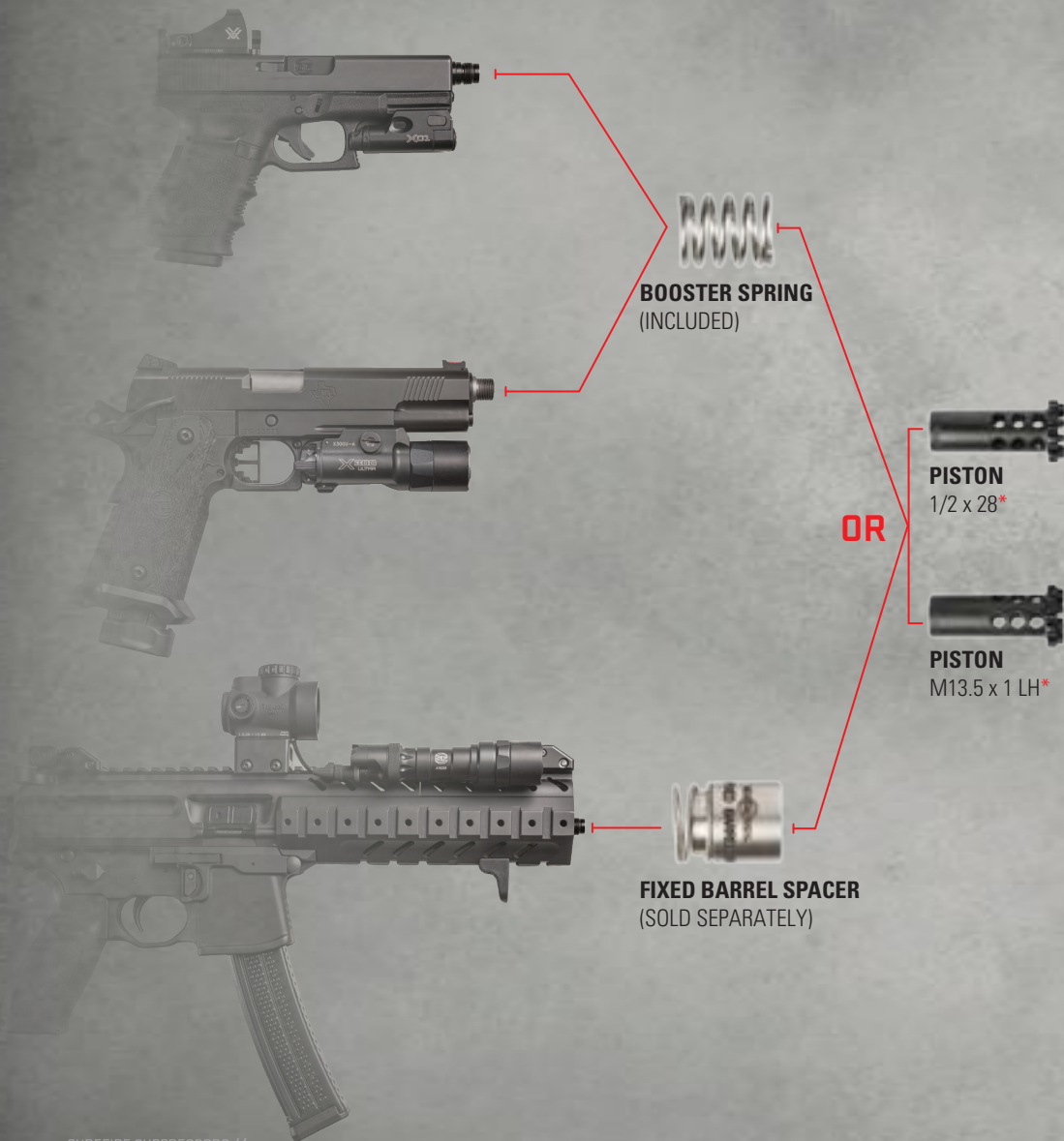
BLACK
SOCOM762-MG-BK



DARK EARTH
SOCOM762-MG-DE

THREAD-ON SUPPRESSORS FOR PISTOLS & RIFLES

The RYDER 9 and 9M suppressors are designed for 9mm handgun, carbine and rifle option weapons, as well as, being full-auto rated. These direct thread option suppressors can be ordered in three different colors with either a 1/2 x 28 threaded piston or M13.5 x 1 LH depending on the host weapon. Additionally for carbine use, the SureFire Fixed Barrel Spacer is available to improve reliability. The RYDER 9 Modular also allows the user to configure the overall length of the suppressor depending on needs at hand.



SF Ryder™
SERIES

SF RYDER™ 9-Ti

SUPPRESSOR FOR 9 mm PISTOLS & RIFLES



BLACK



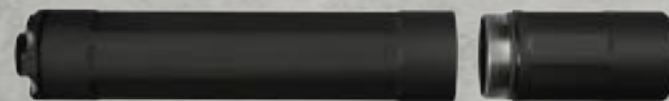
DARK EARTH



GRAY

SF RYDER™ 9M-Ti

SUPPRESSOR FOR 9 mm PISTOLS & RIFLES



BLACK



DARK EARTH



GRAY

*Alternate threaded pistons sold separately.

The stainless-steel constructed RYDER 9-MP5 is a duty-use suppressor for the H&K MP5 sub-machine gun. The suppressor attaches to a standard tri-lug barrel via our patented Fast-Attach® mechanism, similar to the way our best-in-class SOCOM Series suppressors attach. The patented stainless steel baffles are extremely durable and highly effective at attenuating noise, along with built-in spacers help prevent carbon buildup. The suppressor is easily disassembled for cleaning, and the baffles are indexed and numbered for ease of reassembly. Designed for hard-core use, the RYDER 9-MP5 does not affect bullet performance or point of impact/point of aim as is the case with other sub-machine gun suppressors. When it comes to durability, performance, and ease of maintenance, the RYDER 9-MP5 is the clear choice for suppressing the MP5.

NEW

SF RYDER™ 9-MP5

SUPPRESSOR FOR 9 mm CARBINES



BLACK
SF RYDER 9-MP5

- Stainless steel construction, rounded ends and fluted body reduce weight with no sacrifice in strength
- Patented stainless steel baffles are durable and provide superior sound attenuation and reduced muzzle blast
- Built-in spacers help reduce carbon buildup between baffles
- Baffles are numbered and indexed for easy reassembly
- Included assembly/disassembly tool for cleaning
- Attaches to Tri-Lug option sub-machine-gun barrels
- Coated with durable, Cerakote finish
- Backed by SureFire No-Hassle Guarantee



SPECIFICATIONS

| | RYDER 9-MP5 |
|--------------|---------------------|
| CALIBER | 9 mm |
| WEIGHT | 15.6 oz (442 g) |
| DIAMETER | 1.3" (3.3 cm) |
| LENGTH | 8" (20.3 cm) |
| CONSTRUCTION | Titanium, Stainless |

The sleek, high-performance SF RYDER 9-Ti suppressor for 9mm pistols and rifles—featuring a strong, ultra-lightweight titanium tube—is built to the same exacting standards as our battle-proven SOCOM Fast-Attach® suppressors. The RYDER 9-Ti's proprietary, highly effective baffles are machined from U.S.-mill certified heat-treated stainless steel bar stock for extreme durability. These ingenious baffles are indexed

and numbered to permit easy disassembly, simple cleaning, and ease of reassembly every time. An extremely durable Cerakote finish, available in three attractive colors, coats the suppressor and protects it from abrasions and corrosion.

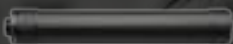
Years of development culminated in the creation of the ultimate 9 mm sound suppressor—boasting superior sound attenuation and performance.

SF Ryder™

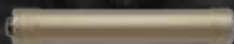
SERIES

SF RYDER™ 9-Ti

SUPPRESSOR FOR 9 mm PISTOLS & RIFLES



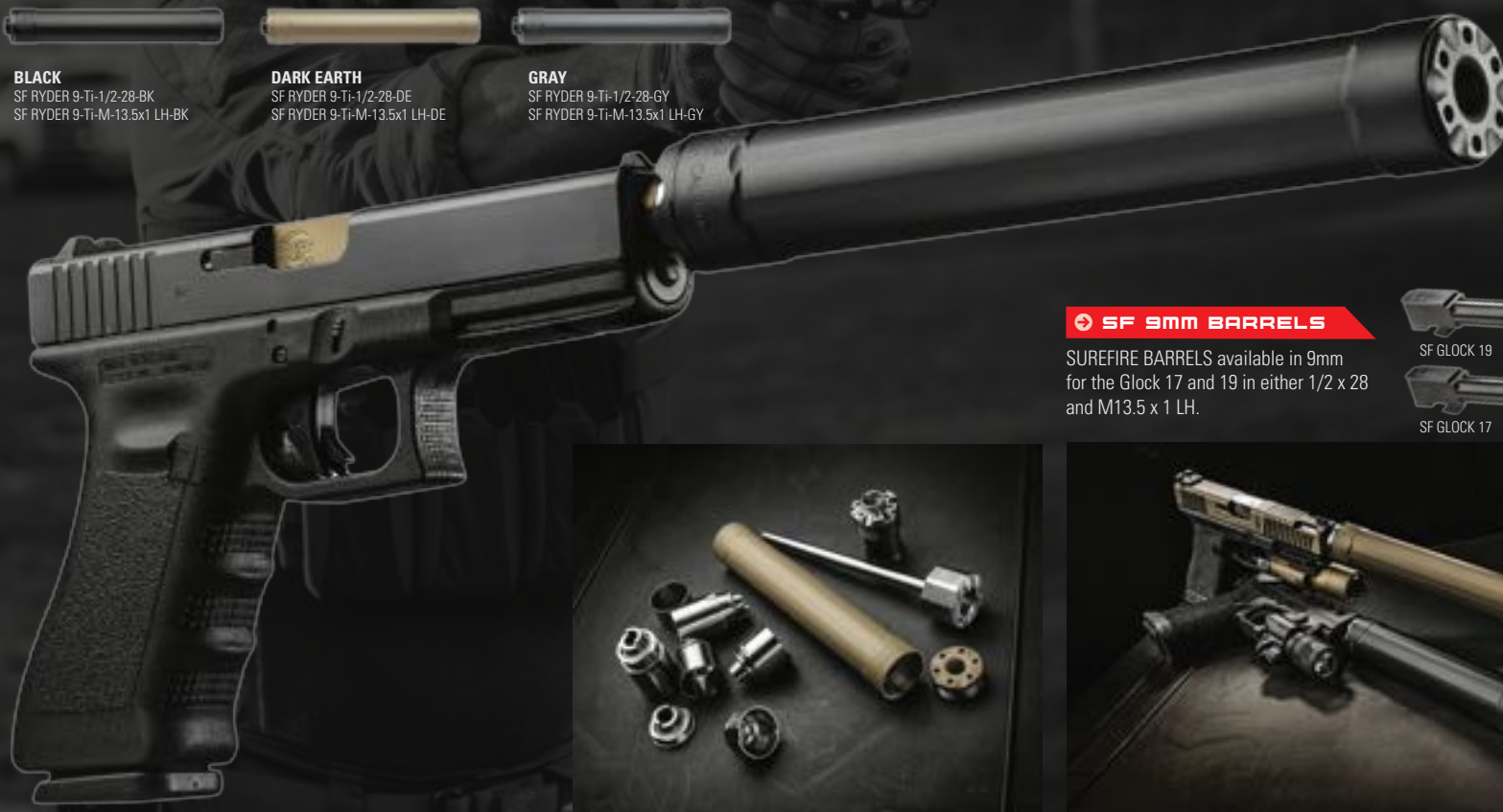
BLACK
 SF RYDER 9-Ti-1/2-28-BK
 SF RYDER 9-Ti-M-13.5x1 LH-BK



DARK EARTH
 SF RYDER 9-Ti-1/2-28-DE
 SF RYDER 9-Ti-M-13.5x1 LH-DE



GRAY
 SF RYDER 9-Ti-1/2-28-GY
 SF RYDER 9-Ti-M-13.5x1 LH-GY



SF 9mm BARRELS

SUREFIRE BARRELS available in 9mm for the Glock 17 and 19 in either 1/2 x 28 and M13.5 x 1 LH.



SF GLOCK 19



SF GLOCK 17



SF RYDER Modular suppressors are built to the same exacting standards as our battle-proven Fast-Attach® SOCOM suppressors. The SF RYDER 9M-Ti suppressor—for 9mm pistols and rifles—features an ultra-light titanium tube, front plate, and rear plate that help minimize weight with no sacrifice in strength. Inside the suppressor are durable heat-treated, stainless steel baffles that are indexed and numbered for easy disassembly and reassembly for cleaning. This model allows for the end-user to

remove a 2" module from the front portion of the suppressor to reduce overall length. Simply reinstall the end plate on the now-shorter option and the suppressor is ready for use. These suppressors are available in three different colors and just like the RYDER 9-Ti come available in either 1/2 x 28 or M13.5 x 1 LH threaded option.

Modular system allows the option to shorten the overall system should a smaller profile or weight savings be needed. Add the module for added sound suppression on 9 mm pistols and rifles.

SF RYDER™ 9M-Ti SUPPRESSOR FOR 9 mm PISTOLS & RIFLES



BLACK
SF RYDER 9M-Ti-1/2-28-BK
SF RYDER 9M-Ti-M13.5X1 LH-BK



DARK EARTH
SF RYDER 9M-Ti-1/2-28-DE
SF RYDER 9M-Ti-M13.5X1 LH-DE



GRAY
SF RYDER 9M-Ti-1/2-28-GY
SF RYDER 9M-Ti-M13.5X1 LH-GY



SPECIFICATIONS

| | RYDER 9-Ti | RYDER 9M-Ti |
|--------------|---------------------|--------------------------------|
| CALIBER | 9 mm | 9 mm |
| WEIGHT | 9.5 oz (269 g) | 8.5 oz (241 g) / 11 oz (312 g) |
| DIAMETER | 1.25" (3.175 cm) | 1.25" (3.175 cm) |
| LENGTH | 7.6" (19.3 cm) | 5.9" (15 cm) / 7.9" (20 cm) |
| CONSTRUCTION | Titanium, Stainless | Titanium, Stainless |

SF RYDER Series thread-on suppressors, built to exacting standards like our battle-proven SOCOM Series Fast-Attach® suppressors, are expressly designed to permit easy maintenance via their simple-to-disassemble baffle system. These patented pig-nose baffles precisely direct gasses from fired rounds for superior sound attenuation

and reduced muzzle blast, while built-in spacers reduce carbon buildup. The RYDER 22-S features heat-treated stainless steel baffles that offer increased durability. SF RYDER Series suppressors also utilize single-point-cut stainless steel threads that quickly and securely screw on to a weapon's threaded barrel. The SF RYDER Series is like no other.

Shown: Zev .22 Conversion Kit, Suppressor Threaded



- 1/2 x 28 SINGLE-POINT-CUT THREADS FOR PROPER ALIGNMENT & SECURE ATTACHMENT
- INDEXED & NUMBERED BAFFLES FOR FOOLPROOF REASSEMBLY
- STAINLESS STEEL BACK PLATE ENSURES SUPPRESSOR REMOVES AS SINGLE UNIT

SF RYDER™ 22-S

SUPPRESSOR FOR .22 LR RIFLES & PISTOLS
WITH 1/2 x 28 THREADS

The ultra-rugged 22-S features heavy-duty heat-treated stainless steel baffles designed to handle .22 LR, .17 HMR and .22 WMR ammunition to include full-auto fire. This award-winning suppressor series is built to perform.

| SPECIFICATIONS | SF RYDER 22-S | |
|----------------|---------------|---------------------|
| | CALIBER | .22 LR |
| | WEIGHT | 5.2 oz (147 g) |
| | DIAMETER | 1" (2.5 cm) |
| | LENGTH | 5.4" (13.7 cm) |
| | CONSTRUCTION | Stainless, Aluminum |

The newly introduced RYDER 22-MINI offers the same great benefits to that of the RYDER 22-S only now in a more compact, shorter overall length with minimal increase in sound attenuation. This suppressor is optimum for use with carbines and pistols chambered in .22 LR along with being rated for .17 HMR or .22 WMR and full-auto rated.

SF Ryder™
 SERIES



NEW

SF RYDER™ 22-MINI

SUPPRESSOR FOR .22 LR RIFLES & PISTOLS
 WITH 1/2 x 28 THREADS

The compact 22-MINI features heavy-duty heat-treated stainless steel baffles designed to handle .22 LR, .17 HMR and .22 WMR ammunition to include full-auto fire.

| SPECIFICATIONS | SF RYDER 22-MINI | |
|----------------|------------------|---------------------|
| | CALIBER | .22 LR |
| | WEIGHT | 4 oz (113 g) |
| | DIAMETER | 1" (2.5 cm) |
| | LENGTH | 3.9" (9.9 cm) |
| | CONSTRUCTION | Stainless, Aluminum |

SureFire WARCOMPS, flash hiders, and muzzle brakes are precision-machined from heat-treated U.S. mill-certified stainless steel bar stock. Depending on the model used, these devices significantly reduce muzzle flash and/or recoil and muzzle rise, helping to conceal your location, preserve dark-adapted vision, and help keep you on target for faster follow-up shots. SureFire flash hiders eliminate 98.5% of muzzle flash, even on short-barreled rifles, which is crucial in helping to conceal a warfighter's position and minimizing

any degradation to dark-adapted vision. Our proprietary design used on muzzle brakes minimizes side blast and rear-directed concussion that can negatively impact the shooter. SureFire muzzle devices require no permanent modification to the host weapon and each come with a blind hole for pin and weld as needed by the customer.

➔ Visit surefire.com for caliber and thread options.

WARCOMP™

COMPENSATOR - FLASH HIDER - SOCOM SUPPRESSOR ADAPTER

(AVAILABLE FOR 5.56 mm & 7.62 mm)

The revolutionary SureFire WARCOMP™ is the world's most shootable compensator / flash hider. When used in conjunction with a SureFire SOCOM Series Fast-Attach® suppressor, the WARCOMP provides multiple bearing surfaces to ensure superior suppressor alignment. It's patented design provides three valuable functions:

- Provides approximately 98.5% reduction in muzzle flash compared to a bare muzzle, which helps to conceal the shooter's location and preserve dark-adapted vision.
- Virtually eliminates muzzle rise, which enhances staying on target for faster follow-up shots.
- Serves as a rock-solid mounting adapter for all SureFire SOCOM Series Fast-Attach® suppressors.



5.56 mm shown



5.56 mm



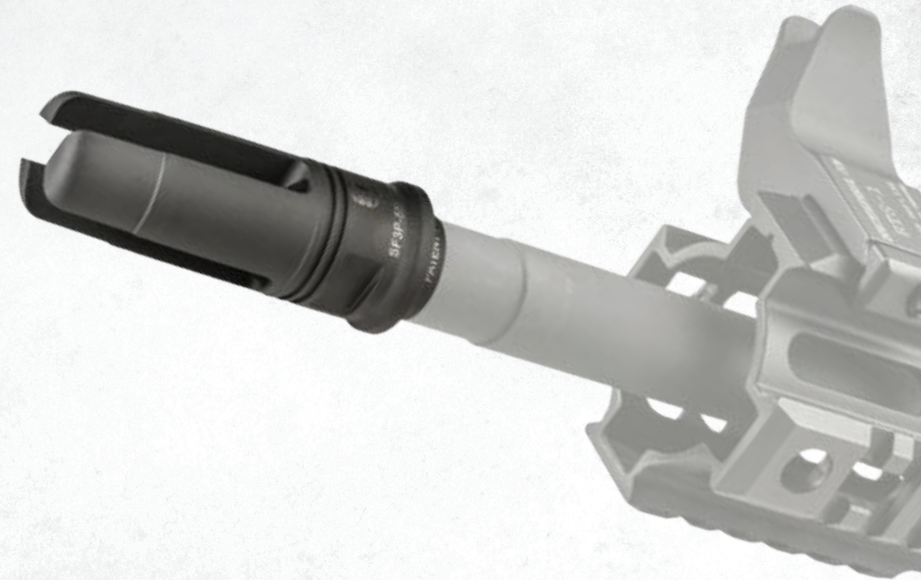
7.62 mm



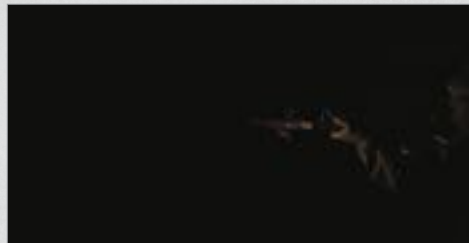
FLASH HIDERS

FLASH HIDER - SOCOM SUPPRESSOR ADAPTER MODELS

SureFire SOCOM flash hidens, featuring precision stainless steel construction and robust coating, produce over 98.5% reduction in muzzle flash compared with a bare muzzle — ideal for concealing a shooter's location. SOCOM flash hidens also serve as adapters for mounting SOCOM Series Fast-Attach® sound suppressors.



Bare muzzle:
M4 Carbine, M855 ammunition



With SureFire flash hider:
M4 Carbine, M855 ammunition

FEATURES

- Heat-treated stainless steel construction precision CNC machined from U.S. mill-certified bar stock
- High-precision single-point barrel interface threads
- Labyrinth seals mitigate gas leaking from back of suppressor lock ring
- Coating provides maximum protection against harsh environmental conditions and facilitates cleaning after extreme use
- Inspected for all critical dimensions including concentricity and alignment
- Made in the USA

MUZZLE BRAKES

MUZZLE BRAKE - SOCOM SUPPRESSOR ADAPTER MODELS

These models greatly reduce recoil and muzzle movement to keep shooters on target for faster follow-up shots. These high-precision models also include single-point-cut threads for optimal thread interface and are coated for maximum protection and facilitate cleaning—even after extended use. When used with a SOCOM Series suppressor, the design provides multiple bearing surfaces to ensure superior suppressor alignment.



FEATURES

- Heat-treated stainless steel construction precision CNC machined from U.S. mill-certified bar stock
- High-precision single-point barrel interface threads
- Labyrinth seals mitigate gas leaking from back of suppressor lock ring
- Coating provides maximum protection against harsh environmental conditions and facilitates cleaning after extreme use
- Inspected for all critical dimensions including concentricity and alignment
- Made in the USA

SHOT 1



SHOT 2

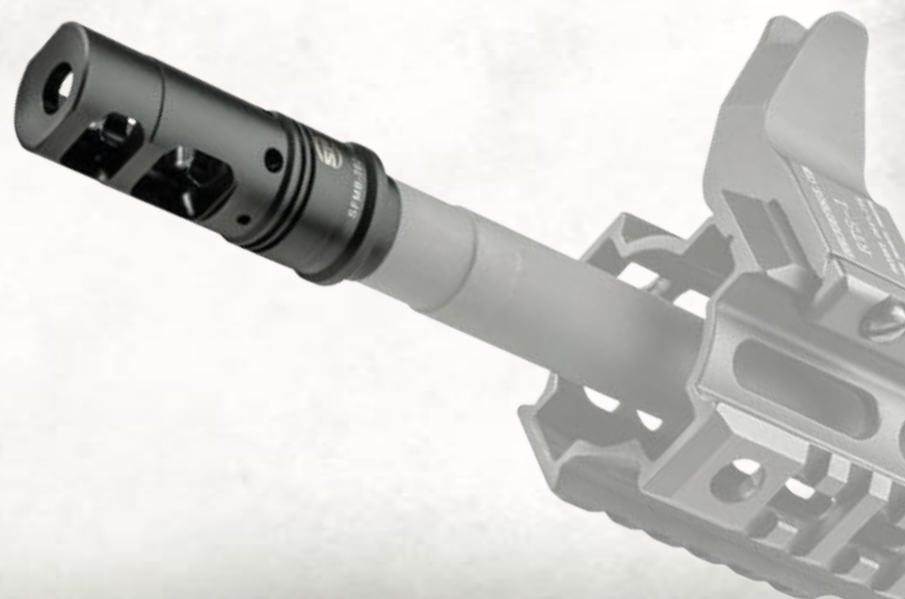


Frames taken from a video of two consecutive rapid-fire shots, fired from the shoulder by Mike Voigt, using an AR-type 5.56 mm rifle with a SureFire muzzle brake. White dot is a fixed reference point on muzzle brake. Frames for each shot arranged vertically. For each vertical sequence:

Row 1 Immediately before shot is fired

Row 2 Shot is fired

Row 3 Point of maximum rearward weapon movement



WARDEN BLAST DIFFUSER

FOR 5.56 mm & 7.62 mm SOCOM MUZZLE DEVICES



BLACK
WARDEN-BK



DARK EARTH
WARDEN-DE

The SureFire Warden Blast Diffuser directs the concussive blast of the muzzle forward of the weapon system and the shooter instead of venting to the side, as seen with stand-alone muzzle brake devices. This aids in reducing the overpressure and flash felt by others to the immediate left and right of the shooter's firing position. The Warden securely attaches to any SureFire SOCOM 5.56 or 7.62 muzzle device via the same patented SureFire Fast-Attach® system found on the SureFire SOCOM suppressor series. The Warden also helps minimize dust signature when firing from a prone position, which would typically be seen when firing from the prone position with a standard flash hider or muzzle brake.



➔ FEATURES

- DIRECTS CONCUSSION AND MUZZLE BLAST FORWARD
- ATTACHES TO SOCOM SERIES MUZZLE DEVICES WITH THE PROVEN SUREFIRE FAST-ATTACH® SYSTEM
- RUGGED STAINLESS STEEL BODY BUILT TO SUREFIRE'S EXACTING STANDARDS
- COATING MAINTAINS LOOK AND PROVIDES DURABILITY
- BACKED BY SUREFIRE'S NO-HASSLE GUARANTEE
- MADE IN THE USA



PROPER ALIGNMENT



OUT OF ALIGNMENT

BORE ALIGNMENT RODS

5.56 mm, 6.5 mm, 6.8 mm, 7.62 mm, .338 caliber

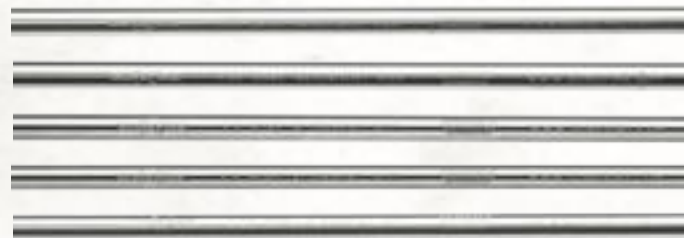
The SureFire Bore Rods are intended for checking concentricity prior to firing suppressed on a new platform. The rod most closely represents the bullet flight path and will show any issue of alignment, if present. Recommended to verify barrel to adapter to suppressor alignment, for any new build or any previously unshot setup. Simply insert rod through the mounted suppressor of an unloaded weapon. Equal space should be seen between bore of suppressor and centered rod.




Check out our "How To" video, for detailed instructions on checking concentricity of your suppressor on a new platform.

 **SEE VIDEO**

www.surefire.com/vid/borerod





At SureFire, our mission is to help you accomplish your task, which includes getting you home safely. That's why we continually solicit input from special operations groups, elite law enforcement professionals, first responders, hunters, and anyone else who relies on gear to help them survive. We combine this feedback with imagination, engineering excellence, state-of-the-art technology, the finest materials, and precision manufacturing to create our best-in-class tactical gear. That's why we build—in addition to sound suppressors—the world's finest handheld illumination tools, hands-free lights, WeaponLights, high-capacity magazines, and hearing protection, along with other tactical products.

**WE BUILD THE BEST
FOR THE BEST**



TRAINING / SAFETY DEVICES

SureFire produces specific product to assist in augmenting training needs when a live suppressor is not feasible. These products can come in any color required by contract and can even be optimized for specific weapon types.

www.surefire.com/suppressor-accessories



HIGH-CAPACITY MAGAZINES

Reliable, smooth-feeding SureFire High-Capacity Magazines reduce reload downtime and increase your ability to continuously engage targets. Constructed of hard-anodized aluminum and compatible with M4/M16/AR-15 variants and other firearms that accept STANAG 4179 magazines. Available in 60- and 100-round versions.

www.surefire.com/magazines



ILLUMINATION TOOLS

World-famous SureFire illumination tools are as rugged and reliable as the hard-core men and women who use them. These products are extremely durable and function in even the harshest conditions. These are the gold standard of illumination tools and the top choice of elite law enforcement and military professionals around the world.

www.surefire.com



DUECK DEFENSE PRODUCTS

Dueck Defense Products bring the tactical edge to the shooting world, both for duty use and competition. The Rapid Transition Sights (RTS) mount directly to a weapon's MIL-STD-1913 (Picatinny) rail and are offset from center by 45 degrees.

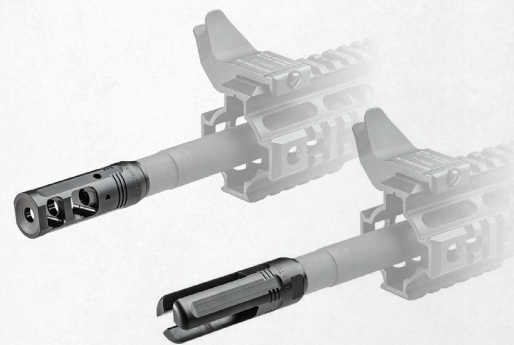
www.surefire.com/dueckdefense



HEARING PROTECTION

Originally developed for demanding tactical professionals, Sonic Defenders® earplugs are effective, affordable hearing protection for anyone exposed to potentially harmful noise. A low-profile design, patented EarLock® rings that lock the plugs in place, and soft-polymer construction provide all-day comfort—which means you'll actually wear them.

www.surefire.com/hearingprotection



ELIMINATOR / PRO COMP

SureFire muzzle brakes and flash hiders, featuring precision stainless steel construction and Ionbond DLC or Melonite coating, deliver superior performance. They are threaded to mate with popular rifle models and fit other firearms with correct threads and barrel configuration.

www.surefire.com

THE SUREFIRE

NO-HASSLE GUARANTEE

CIVILIAN OWNERSHIP OF SOUND SUPPRESSORS

In most states it is legal for civilians to own a firearm sound suppressor. Research your state laws to determine if you may own a suppressor. If the answer is yes, your nearest SureFire Suppressor Dealer can assist you in working through the legal requirements.

We'll do what it takes to keep your SureFire gear running smoothly.

SureFire warrants that if you—our customer—purchase one of our products, and we determine that it is defective in material and/or workmanship during your lifetime, we will repair or replace it—no hassle!

Rechargeable batteries and chargers are warranted for two years from the date of purchase. SureFire hearing-protection products are warranted for 90 days from the date of purchase.

Our warranty does not cover consumables or normal wear-and-tear, or damage resulting from abuse, alterations, unauthorized repairs, or use contrary to SureFire's user manuals.

To help protect your investment SureFire offers reasonable rates to repair damage to our products not covered by our warranty, such as a core rebuild for a suppressor damaged by improper use. You will be provided with a quote for approval before work begins.

WARRANTY CLAIMS

For warranty claims, contact Customer Service at 800-828-8809 (toll free) or 714-545-9444 to obtain a Return Merchandise Authorization (RMA) number. Carefully pack your SureFire product and ship pre-paid (no CODs please) to the mailing address provided by Customer Service. SureFire will pay any reasonable cost to return the item to you.

STANDARD DISCLAIMER

EXCEPT AS SPECIFIED ABOVE OR PROHIBITED BY APPLICABLE LAW: ALL EXPRESS OR IMPLIED CONDITIONS AND WARRANTIES, INCLUDING, WITHOUT LIMITATION, ANY IMPLIED WARRANTY OR CONDITION OF MERCHANTABILITY OR FITNESS FOR A PARTICULAR PURPOSE, OR ACCURACY OF ANY INFORMATIONAL CONTENT, ARE HEREBY EXCLUDED AND DISCLAIMED BY SUREFIRE; AND IN NO EVENT WILL SUREFIRE BE LIABLE FOR ANY SPECIAL, DIRECT, INDIRECT, CONSEQUENTIAL, INCIDENTAL OR PUNITIVE DAMAGES HOWSOEVER ARISING AND REGARDLESS OF THE THEORY OF LIABILITY, EVEN IF ADVISED OF THE POSSIBILITY OF SUCH DAMAGES. PRODUCTS, PRICES, AVAILABILITY, SPECIFICATIONS, AND OFFERS ARE SUBJECT TO CHANGE OR CANCELLATION AT ANY TIME WITHOUT NOTICE.

**TO LOCATE THE NEAREST
SUREFIRE DEALER:**

www.surefire.com/dealer-locator
800-828-8809 U.S.A.

www.surefire.com/suppressors



SUREFIRE®

18300 MT. BALDY CIRCLE • FOUNTAIN VALLEY
CA 92708 • U.S.A. • WWW.SUREFIRE.COM

